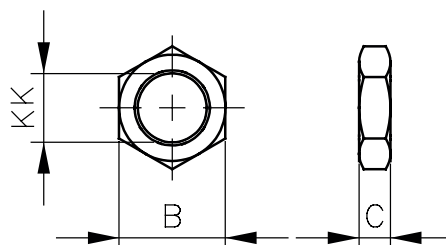


Mounting Accessories



Fixtures for Rod-End

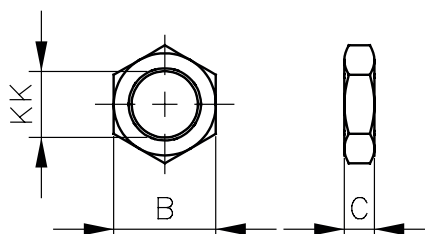
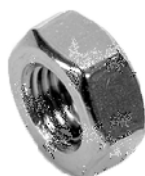
page 128



UA

Piston rod nut

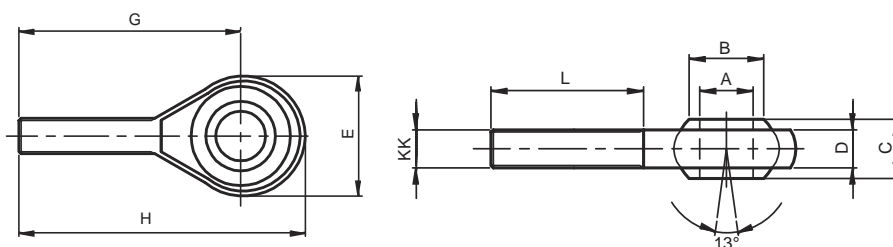
Type	Thread	KK	B	C
UA-M4	M4	M4	7	3,2
UA-M6	M6	M6	10	5
UA-M8	M8	M8	13	6,5
UA-M10x1,25	M10x1,25	M10x1,25	17	5
UA-M12x1,25	M12x1,25	M12x1,25	19	6
UA-M16x1,5	M16x1,5	M16x1,5	24	8
UA-M20x1,5	M20x1,5	M20x1,5	30	10
UA-M27x2	M27x2	M27x2	41	13



UAX

Piston rod nut
INOX - Stainless Steel

Type	Thread	KK	B	C
UAX-M6	M6	M6	7	3,2
UAX-M8	M8	M8	10	5
UAX-M10x1,25	M10x1,25	M10x1,25	13	6,5



UKF

Rod eye
with external thread

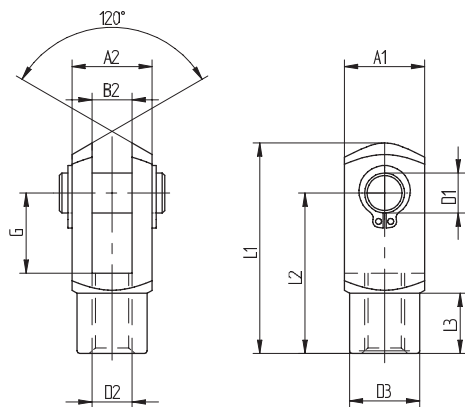
Type	Thread	KK	A	B	C	D	E	G	H	L
UKF-M5	M5	M5	5	7,5	8	7,5	18	33	42	19
UKF-M6	M6	M6	6	8,9	9	7,5	20	36	46	21
UKF-M8	M8	M8	8	10,4	12	9,5	24	42	54	25
UKF-M10	M10	M10	10	12,9	14	11,5	30	48	63	28
UKF-M12	M12	M12	12	15,4	16	12,5	34	54	71	32



Felfogó elemek dugattyúrúdra

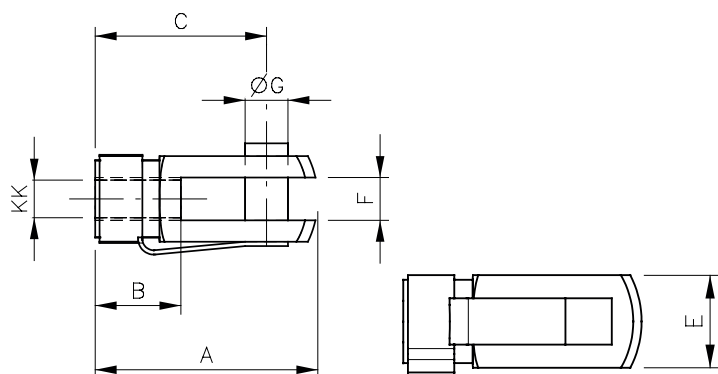
316

UVX



Clevis
with lockable pin
INOX - Stainless Steel

Type	A1	A2	B2	G	L1	L2	L3	D2	D3	D1
UVX-M6	12	12	6	12	31	24	9	M6x1	10	6
UVX-M8	16	16	8	16	42	32	12	M8x1,25	14	8
UVX-M10x1,25	20	20	10	20	52	40	15	M10x1,25	18	10
UVX-M12x1,25	24	24	12	24	62	48	18	M12x1,25	20	12
UVX-M16x1,5	32	32	16	32	83	64	24	M16x1,5	26	16
UVX-M20x1,5	40	40	20	40	105	80	30	M20x1,5	34	20
UVX-M27x1,5	55	55	30	54	148	110	38	M27x2	48	30
UVX-M36x2	70	70	35	72	188	144	40	M36x2	60	35



UV

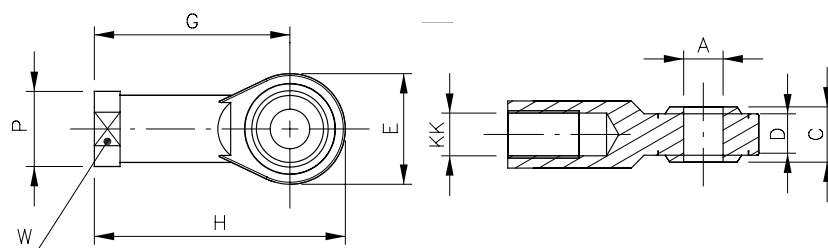
Clevis
with lockable pin

Type	Thread	KK	A	B	C	E	F	G
UV-M4	M4	M4	21	8	16	8	4	4
UV-M6	M6	M6	31	12	24	12	6	6
UV-M8	M8	M8	42	16	32	16	8	8
UV-M10x1,25	M10x1,25	M10x1,25	52	20	40	20	10	10
UV-M12x1,25	M12x1,25	M12x1,25	62	24	48	24	12	12
UV-M16x1,5	M16x1,5	M16x1,5	83	32	64	32	16	16
UV-M20x1,5	M20x1,5	M20x1,5	105	40	80	40	20	20
UV-M27x2	M27x2	M27x2	148	56	110	55	30	30
UV-M36x2	M36x2	M36x2	188	72	144	70	35	35
UV-M42x2	M42x2	M42x2	232	84	168	85	42	42



Fixtures for Rod-End

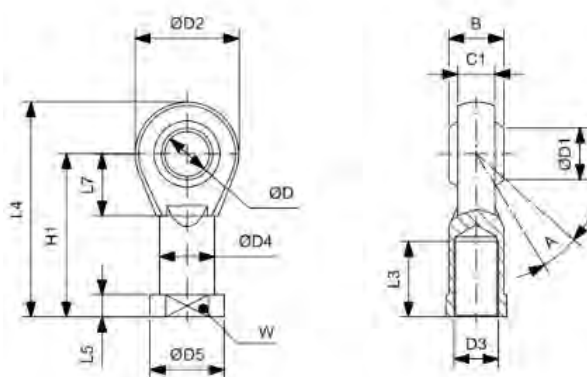
page 130



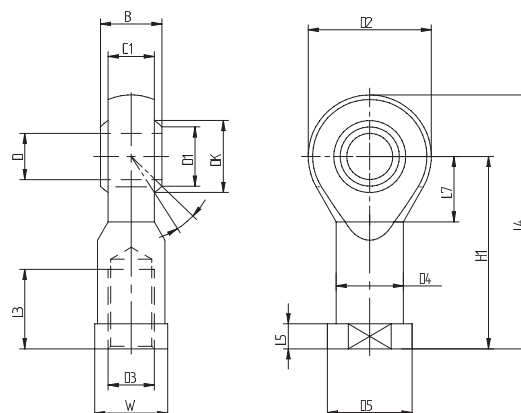
UK

Rod Eye with internal thread

Type	Thread	KK	A	C	D	E	G	H	P	W
UK-M4	M4	M4	5	8	6	18	27	36,5	9	11
UK-M6	M6	M6	6	9	6,75	20	30	40,5	11	13
UK-M8	M8	M8	8	12	9	24	36	48,5	14	16
UK-M10x1,25	M10x1,25	M10x1,25	10	14	10,5	28	43	57,5	17	19
UK-M12x1,25	M12x1,25	M12x1,25	12	16	12	32	50	66,5	19	22
UK-M16x1,5	M16x1,5	M16x1,5	16	21	15	42	64	85,5	22	27
UK-M20x1,5	M20x1,5	M20x1,5	20	25	18	50	77	102,5	30	34
UK-M27x2	M27x2	M27x2	30	37	25	70	110	145,5	41	50



Type	D3	W	L3	A	D	D1	C1	B	D4	D5	L5	L7	H1	L4	D2
UK-M36x2	M36x2	50	56	19°	35	37,7	28	43	46	58	17	41	125	165	80
UK-M42x2	M42x2	55	60	16°	40	45,1	33	49	53	65	19	45	142	187	91



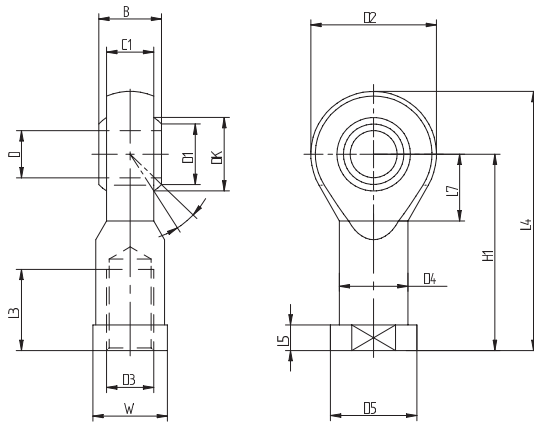
Type	a°	B	C1	D1	D2	D3	D4	D5	DK	D	H1	L2	L4	L5	L7	W
UK-M48x2	14	60	45	56,6	117	M48x2	65	75	82,5	50	162	65	218	23	58	65



Fixtures for Rod-End

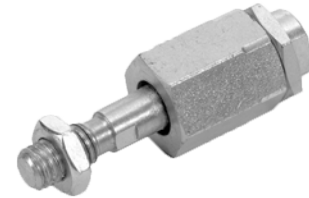
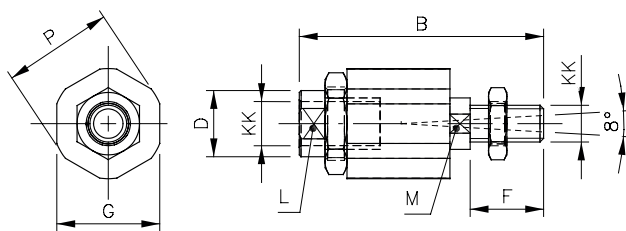


UKX



Rod Eye with internal thread INOX - Stainless Steel

Type	a°	B	C1	D1	D2	D3	D4	D5	DK	D	H1	L3	L4	L5	L7	W
UKX-M8	14	12	9	10,4	24	M8	12,5	16	15,87	8	36	16	48	5	13	14
UKX-M10x1,25	13	14	10,5	12,9	28	M10x1,25	15	19	19,05	10	43	20	57	6,5	15	17
UKX-M12x1,25	13	16	12	15,4	32	M12x1,25	17,5	22	22,22	12	50	22	66	6,5	17	19
UKX-M16x1,5	15	21	15	19,3	42	M16x1,5	22	27	28,57	16	64	28	85	8	23	22
UKX-M20x1,5	14	25	18	24,3	50	M20x1,5	27,5	34	34,92	20	77	33	102	10	27	30
UKX-M27x2	17	37	25	34,8	70	M27x2	40	50	50,8	30	110	51	145	15	36	41
UKX-M36x2	16	43	28	37,7	80	M36x2	46	58	57,15	35	125	56	165	17	41	50



Self-aligning coupling

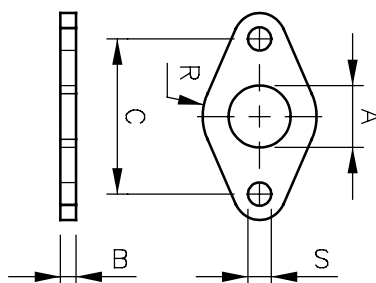
FK

Type	Thread	KK	B	D	F	G	L	M	P
FK-M4	M4	M4	33	11	8	12,7	-	3,2	11
FK-M6	M6	M6	35	8,5	10	14,5	7	5	13
FK-M8	M8	M8	48,5	12,5	12	19	10	7	17
FK-M10x1,25	M10x1,25	M10x1,25	69,5	21,5	20	32	19	12	30
FK-M12x1,25	M12x1,25	M12x1,25	74,5	21,5	24	32	19	12	30
FK-M16x1,5	M16x1,5	M16x1,5	103	33,5	32	45	30	19	41
FK-M20x1,5	M20x1,5	M20x1,5	120	33,5	40	45	30	19	41
FK-M27x2	M27x2	M27x2	147	40,5	44	-	40	24	55



Accessories for Round Cylinder | ISO 6432

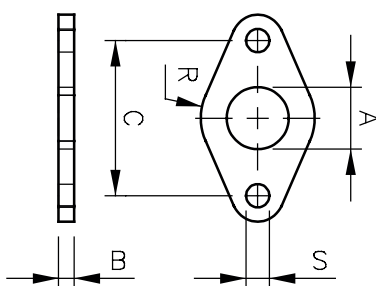
page 132



RF

Flange

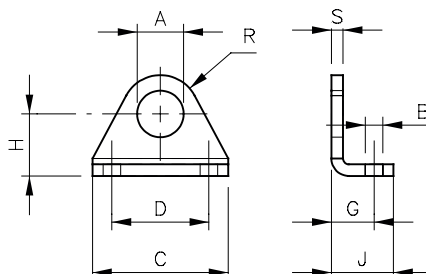
Type	Diameter	A	B	C	R	S
RF 8-10	Ø-10	12	3	30	9	4,5
RF 12-16	Ø2-16	16	4	40	13	5,5
RF 20-25	Ø0-25	22	5	50	19	6,5



RFX

Flange
INOX - Stainless Steel

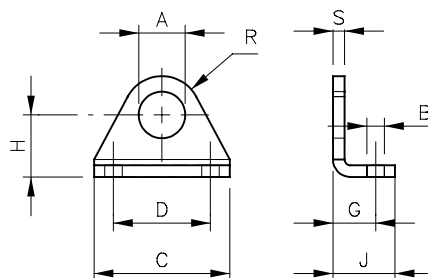
Type	Diameter	A	B	C	R	S
RFX 16	Ø6	16	4	40	13	5,5
RFX 20-25	Ø0-25	22	5	50	19	6,5



RL

Foot mounting

Type	Diameter	A	B	C	D	G	H	J	R	S
RL 8-10	Ø-10	12	4,5	35	25	11	16	16	10	3
RL 12-16	Ø2-16	16	5,5	42	32	14	20	20	13,5	4
RL 20-25	Ø0-25	22	6,6	54	40	17	25	25	18	5



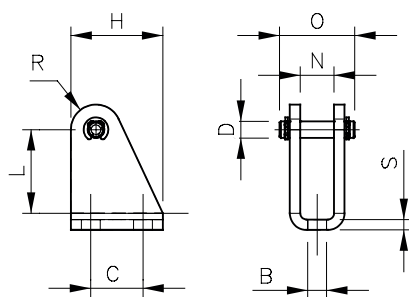
RLX

Foot mounting
INOX - Stainless Steel

Type	Diameter	A	B	C	D	G	H	J	R	S
RLX 16	Ø6	16	5,5	42	32	14	20	20	13,5	4
RLX 20-25	Ø0-25	22	6,6	54	40	17	25	25	18	5



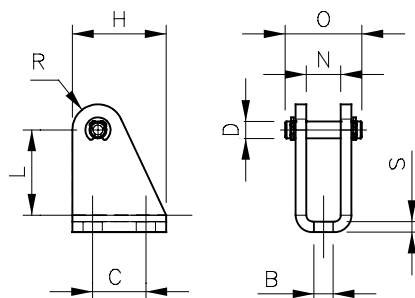
Accessories for Round Cylinder | ISO 6432



RG

Female hinge with pin

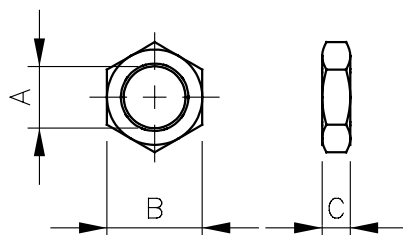
Type	Diameter	B	C	D	H	L	N	O	R	S
RG 8-10	Ø-10	4,5	12,5	4	20	24	8,1	17	5	2,5
RG 12-16	Ø2-16	5,5	15	6	25	27	12,1	23	7	3
RG 20-25	Ø0-25	6,6	20	8	32	30	16,1	29,5	10	4



RGX

Female hinge with pin
INOX - Stainless Steel

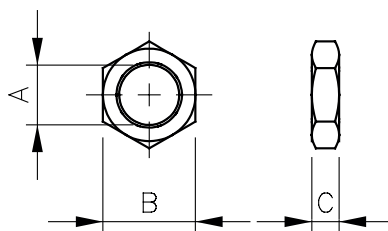
Type	Diameter	B	C	D	H	L	N	O	R	S
RGX 16	Ø6	5,5	15	6	25	27	12,1	23	7	3
RGX 20-25	Ø0-25	6,6	20	8	32	30	16,1	29,5	10	4



RA

Nose nut

Type	Diameter	A	B	C
RA 8-10	Ø-10	M12x1,25	19	7
RA 12-16	Ø2-16	M16x1,5	22	6
RA 20-25	Ø0-25	M22x1,5	27	8



RAX

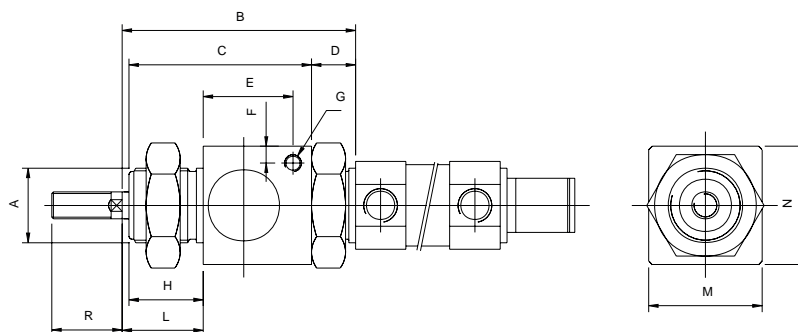
Nose nut
INOX - Stainless Steel

Type	Diameter	A	B	C
RAX 16	Ø6	M16x1,5	22	6
RAX 20-25	Ø0-25	M22x1,5	27	8



Accessories for Round Cylinder | ISO 6432

page 134

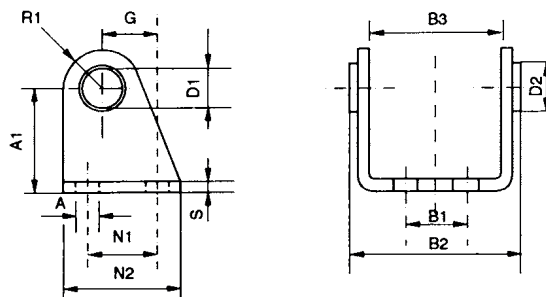
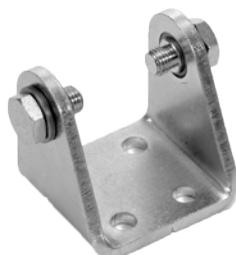


MRL

Rod lock

Type	Diameter	A	B	C	D	E	F	G	H	L	M	N	R
MRL 20	∅0	M22x1,5	68,5	54	13	27	5	M5	22	23,5	34	35	23
MRL 25	∅5	M22x1,5	68,5	54	13	27	5	M5	22	24,5	34	35	26

Accessories for Round Cylinder | A-Series

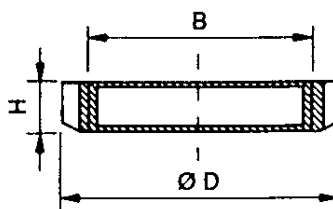


ACC

Foot flange

Type	Diameter	D1	D2	A	A1	G	M1	N1	N2
ACC 32	∅2	10	16	7	35	20	M8x1	24	40
ACC 40	∅0	12	18	9	40	27	M10x1	30	50
ACC 50	∅0	14	23	9	45	30	M12x1,5	34	54
ACC 63	∅3	16	24	9	50	34	M14x1,5	35	65

Type	Diameter	R1	S	CH2	B1	B2	B3	V	C1	C2
ACC 32	∅2	12	4	13	20	50,1	38,1	4	6	18
ACC 40	∅0	13	5	17	28	60,1	46,1	5	7	21,6
ACC 50	∅0	14	6	19	36	74,1	57,1	6	9	26,4
ACC 63	∅3	16	6	19	42	88,1	70,1	6	15	34



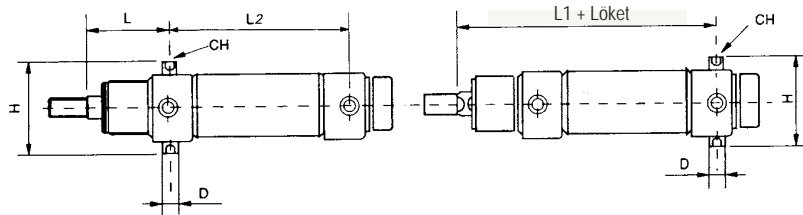
AGT

Slotted nut

Type	Diameter	B	D	H
AGT 32	∅2	M30x1,5	45	7
AGT 40	∅0	M38x1,5	50	8
AGT 50-63	∅0-63	M45x1,5	58	9



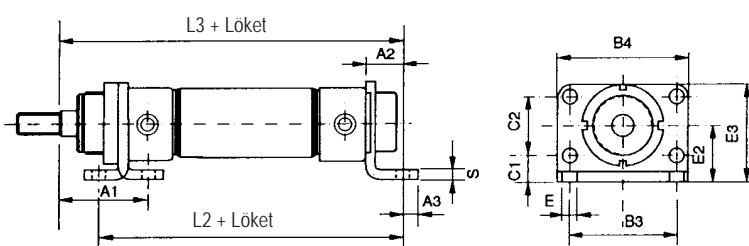
Accessories for Round Cylinder | A-Series



APE

Pivots

Type	Diameter	D	H	L1	L2	L	CH
APE 32	Ø2	10	51	125	78	47	5
APE 40	Ø0	12	61	144	87	57	6
APE 50	Ø0	14	75	158	96	62	6
APE 63	Ø3	16	90	161	98	63	8

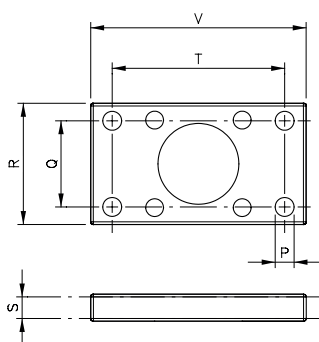


APD

Hinge with screws

Type	Diameter	E	E2	E3	C1	C2	L2	L3	B3	B4	S	A1	A2	A3
APD 32	Ø2	7	28	49	14	28	124	148	52	66	4	48	14	7
APD 40	Ø0	9	33	58	18	30	151	176	60	80	5	60	20	10
APD 50	Ø0	9	40	70	20	40	160	190	70	90	6	64	20	10
APD 63	Ø3	9	45	80	20	50	164	194	76	96	6	65	20	10

Accessories for Profile and compact Cylinder | ISO



DF

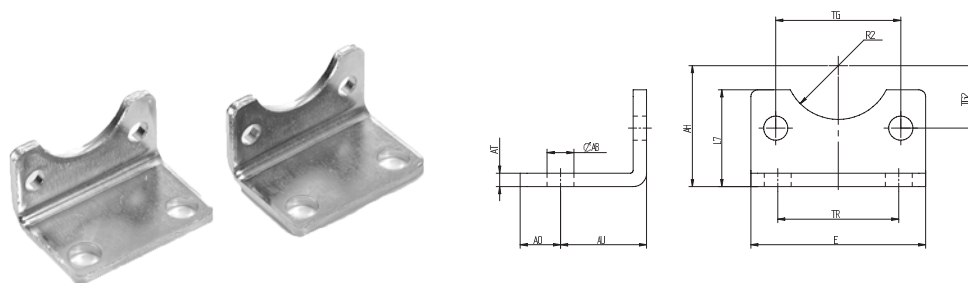
ISO flange

Type	Diameter	P	Q	R	S	T	V
DF 32	Ø2	7	32	45	10	64	80
DF 40	Ø0	9	36	52	10	72	90
DF 50	Ø0	9	45	65	12	90	110
DF 63	Ø3	9	50	75	12	100	120
DF 80	Ø0	12	63	95	16	126	150
DF 100	Ø00	14	75	115	16	150	170
DF 125	Ø25	16	90	140	20	180	205



Accessories for Profile and Compact Cylinder | ISO

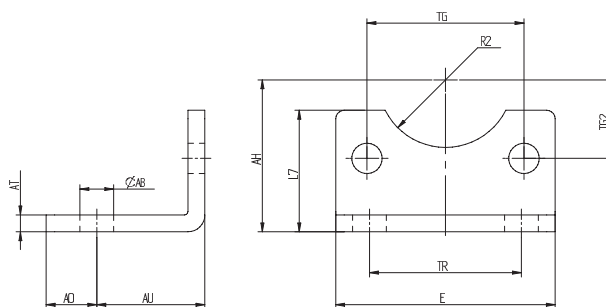
page 136



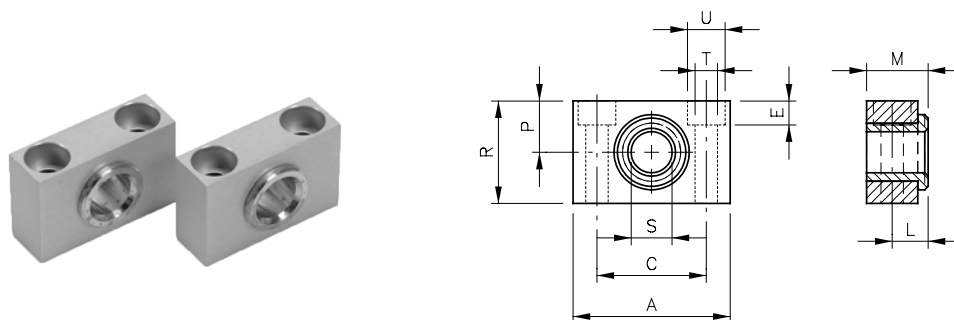
DL

ISO flange

Type	Diameter	B	C	E	F	O	U	V
DL 32	Ø2	4	32,5	45	32	7	24	35
DL 40	Ø40	4	38	52	36	9	28	36
DL 50	Ø0	5	46,5	65	45	9	32	47
DL 63	Ø3	5	56,5	75	50	9	32	45
DL 80	Ø0	6	72	92	63	12	41	55
DL 100	Ø00	6	89	115	71	14	41	57
DL 125	Ø25	8	110	140	90	16	45	70



Type	Diameter	AH	AO	AT	AU	E	L7	AB	R2	TG2	TG	TR
DL 160	Ø60	115	15	10	60	180	100	18,5	32,5	70	140	115
DL 200	Ø00	135	30	12	70	220	109	24	37,5	87,5	175	135



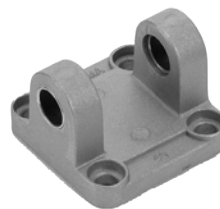
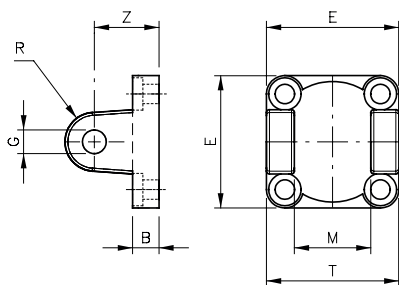
DSL

Support for intermediate hinge

Type	Diameter	A	C	E	L	M	P	R	S	T	U
DSL 32	Ø2	46	32	7	10,5	18	15	30	12	6,6	11
DSL 40-50	Ø0-50	55	36	9	12	21	18	36	16	9	15
DSL 63-80	Ø3-80	65	42	11	13	23	20	40	20	11	18
DSL 100-125	Ø00-125	75	50	13	16	28,5	25	50	25	14	20



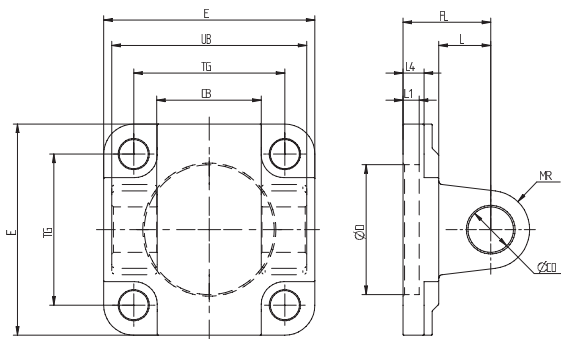
Accessories for Profile and Compact Cylinder | ISO



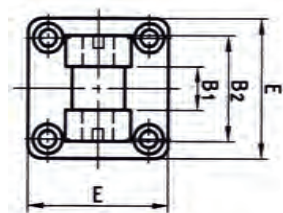
ISO female hinge

DG

Type	Diameter	B	E	G	M	R	T	Z
DG 32	Ø2	9	45	10	26	10	45	22
DG 40	Ø40	9	52	12	28	12	52	25
DG 50	Ø0	11	65	12	32	12	60	27
DG 63	Ø3	11	75	16	40	16	70	32
DG 80	Ø0	14	95	16	50	16	90	36
DG 100	Ø00	14	115	20	60	20	110	41
DG 125	Ø25	20	140	25	70	25	130	50



Type	Diameter	CB	E	FL	L1	L4	L	MR	ØD	Ø	TG	UB
DG 160	Ø60	90	180	55	7	10	35	25	30	65	140	170
DG 200	Ø00	90	220	60	7	10	35	25	30	75	175	170
DG 250	Ø50	110	270	70	17	-	45	40	40	90	220	200
DG 320	Ø20	120	350	80	22	-	50	45	45	110	270	200



ISO narrow female hinge

DGS

Type	Diameter	B1	B2	CN	E	FL	R1	R2	XD
DGS 32	Ø2	14	34	10	45	22	10	17	142
DGS 40	Ø40	16	40	12	52	25	12	20	160
DGS 50	Ø0	21	45	16	65	27	14	22	170
DGS 63	Ø3	21	51	16	75	32	18	25	190
DGS 80	Ø0	25	65	20	95	36	20	30	210
DGS 100	Ø00	25	75	20	115	41	22	32	230
DGS 125	Ø25	37	97	30	140	50	25	42	275

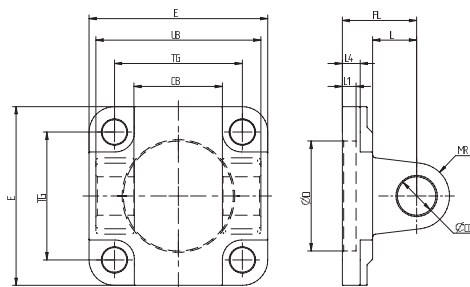


Accessories for Profile and Compact Cylinder | ISO

page 138

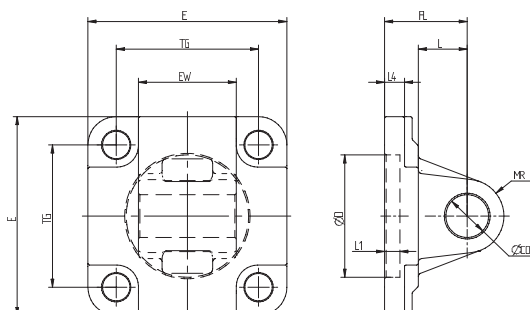
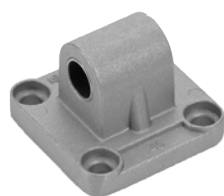


DGX



ISO female hinge
INOX - Stainless Steel

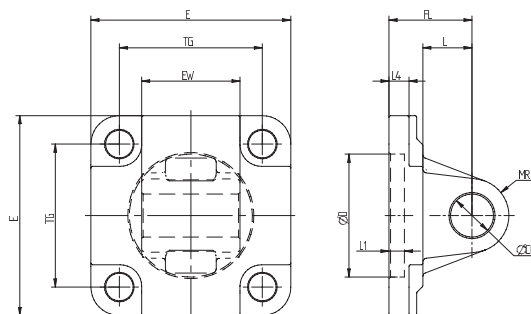
Type	Diameter	CB	E	FL	L1	L4	L	MR	CD	D	TG	UB
DGX 32	Ø2	26	45	22	5	5,5	13	10	10	30	32,5	45
DGX 40	Ø0	28	52	25	5	5,5	16	12	12	35	38	52
DGX 50	Ø0	32	65	27	5	6,5	16	12	12	40	46,5	60
DGX 63	Ø3	40	75	32	5	6,5	21	16	16	45	56,5	70
DGX 80	Ø0	50	93	36	5	10	22	16	16	45	72	90
DGX 100	Ø00	60	110	41	5	10	27	20	20	55	89	110
DGX 125	Ø25	70	134	50	7	10	30	25	25	60	110	130



ISO male hinge

DH

Type	Diameter	B	E	G	M	R	Z
DH 32	Ø2	9	45	10	26	10	22
DH 40	Ø0	9	52	12	28	12	25
DH 50	Ø0	11	65	12	32	12	27
DH 63	Ø3	11	75	16	40	16	32
DH 80	Ø0	14	95	16	50	16	36
DH 100	Ø00	14	115	20	60	20	41
DH 125	Ø25	20	140	25	70	25	50



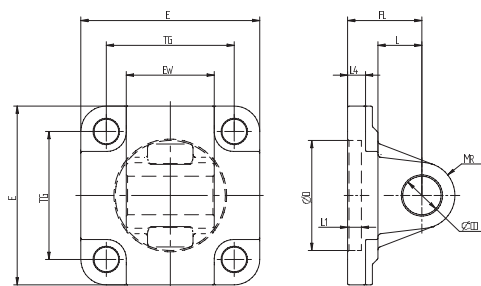
Type	Diameter	EW	E	FL	L1	L4	L	MR	ØD	Ø	TG
DH 160	Ø60	90	180	55	7	10	35	25	30	65	140
DH 200	Ø00	90	220	60	10	11	35	25	30	75	175
DH 250	Ø50	110	270	70	11	17	45	40	40	90	220
DH 320	Ø20	120	350	80	15	22	50	45	45	110	270



Accessories for Profile and Compact Cylinder | ISO



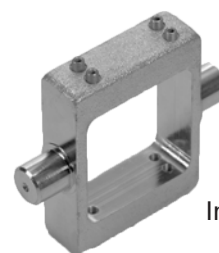
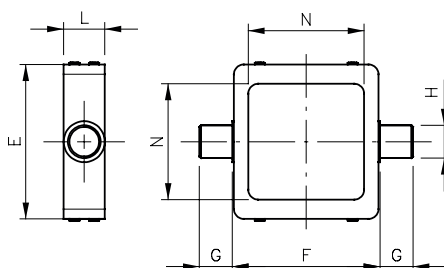
DHX



ISO male hinge
INOX - Stainless Steel

Type	Diameter	E	EW	TG	FL	L1	L	L4	D	CD	MR
DHX 32	Ø2	45	26	32,5	22	5	13	5,5	30	10	10
DHX 40	Ø40	52	28	38	25	5	16	5,5	35	12	12
DHX 50	Ø0	65	32	46,5	27	5	16	6,5	40	12	12
DHX 63	Ø3	75	40	56,5	32	5	21	6,5	45	16	16
DHX 80	Ø0	93	50	72	36	5	22	10	45	16	16
DHX 100	Ø00	110	60	89	41	5	27	10	55	20	20
DHX 125	Ø25	134	70	110	50	7	30	10	60	25	25

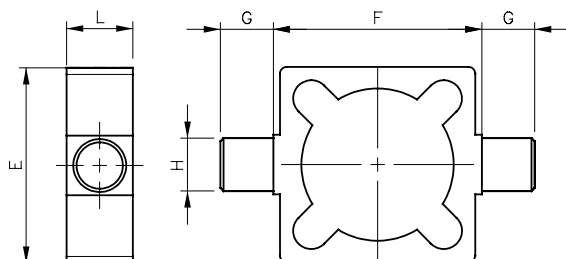
DP



Intermediate hinge for
profile cylinders
of the H-series

Type	Diameter	E	F	G	H	L	N
DP 32	Ø2	71	50	12	12	18	45
DP 40	Ø40	79	63	16	16	20	51
DP 50	Ø0	91	75	16	16	20	60,8
DP 63	Ø3	96	90	20	20	26	70,5
DP 80	Ø0	132	110	20	20	26	87,5
DP 100	Ø00	147	132	25	25	30	107
DP 125	Ø25	155	155	25	25	32	133

DS



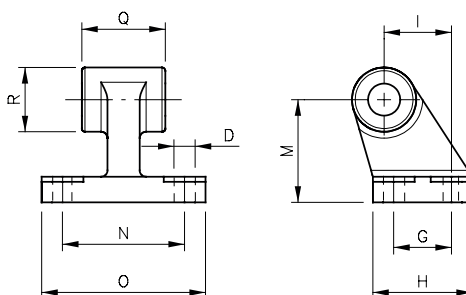
Intermediate hinge for
profile cylinders
of the D-series

Type	Diameter	E	F	G	H	L
DS 32	Ø2	49	50	12	12	18
DS 40	Ø40	59	63	16	16	20
DS 50	Ø0	71	75	16	16	20
DS 63	Ø3	75	90	20	20	26
DS 80	Ø0	105	110	20	20	26
DS 100	Ø00	129	132	25	25	32
DS 125	Ø25	154	160	25	25	33



Accessories for Profile and Compact Cylinder | ISO

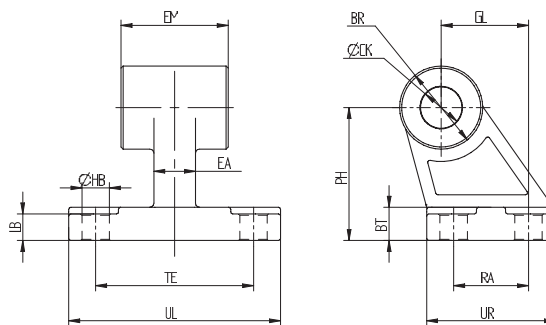
page 140



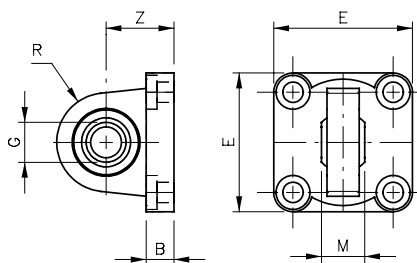
ISO square hinge

DW

Type	Diameter	D	G	H	I	M	N	O	Q	R
DW 32	Ø2	6,6	18	31	21	32	38	51	26	20
DW 40	Ø0	6,6	22	35	24	36	41	54	28	22
DW 50	Ø0	9	30	45	33	45	50	65	32	26
DW 63	Ø3	9	35	50	37	50	52	67	40	30
DW 80	Ø0	11	40	60	47	63	66	86	50	30
DW 100	Ø00	11	50	70	55	71	76	96	60	38
DW 125	Ø25	14	60	90	70	90	94	124	70	45



Type	Diameter	BR	BT	CK	EA	EM	GL	LB	HB	H	RA	TE	UL	UR
DW 160	Ø60	31,5	25	30	36	90	97	21	14	115	88	118	156	126
DW 200	Ø00	31,5	30	30	40	90	105	26	18	135	90	122	162	130



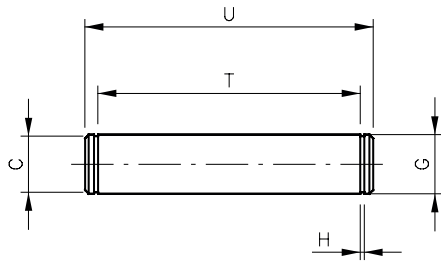
ISO male hinge with ball joint

DKL

Type	Diameter	B	E	G	M	R	Z
DKL 32	Ø2	9	45	10	14	16	22
DKL 40	Ø0	9	52	12	16	19	25
DKL 50	Ø0	11	65	16	21	21	27
DKL 63	Ø3	11	75	16	21	24	32
DKL 80	Ø0	14	95	20	25	28	36
DKL 100	Ø00	14	115	20	25	30	41
DKL 125	Ø25	20	140	30	37	40	50



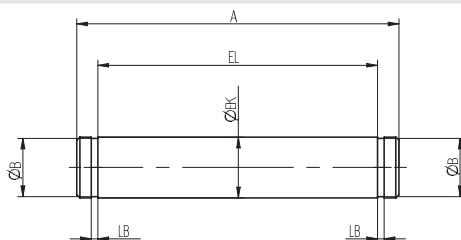
Accessories for Profile and Compact Cylinder | ISO



DC

Pin for hinge

Type	Diameter	C	G	H	T	U
DC 32	Ø2	9,6	10	1,1	46	53
DC 40	Ø40	11,5	12	1,1	53	60
DC 50	Ø0	11,5	12	1,1	61	68
DC 63	Ø3	15,2	16	1,1	71	78
DC 80	Ø0	15,2	16	1,1	91	98
DC 100	Ø00	19	20	1,3	111	118
DC 125	Ø25	23,9	25	1,3	132	139
DC 160-200	Ø60-200	30	28,6	1,6	172	180
DC 250	Ø50	40	37,5	1,85	202	211
DC 320	Ø20	45	42,5	185	222	234



DCX

Pin for hinge
INOX - Stainless Steel

Type	Diameter	A	B	EL	EK	LB
DCX 32	Ø2	53	9,6	46	10	1,1
DCX 40	Ø40	60	11,5	53	12	1,1
DCX 50	Ø0	68	11,5	61	12	1,1
DCX 63	Ø3	78	15,2	71	16	1,1
DCX 80	Ø0	98	15,2	91	16	1,1
DCX 100	Ø00	118	19	111	20	1,3
DCX 125	Ø25	139	23,9	132	25	1,3



DCS

Pin for narrow hinge

Type	Diameter
DCS 32	Ø2
DCS 40	Ø40
DCS 50	Ø0
DCS 63	Ø3
DCS 80	Ø0
DCS 100	Ø00
DCS 125	Ø25



ZHA

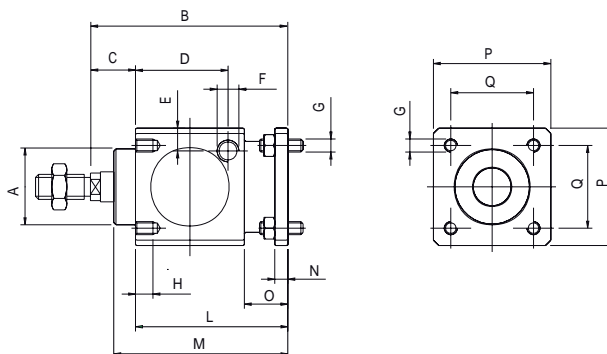
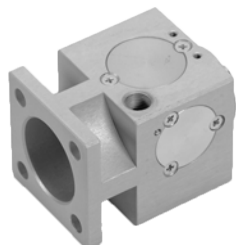
Valve mounting plate

Type	Diameter
ZHA-032 SET	Ø2
ZHA-040 SET	Ø40
ZHA-050 SET	Ø0
ZHA-063 SET	Ø3
ZHA-080 SET	Ø0
ZHA-100 SET	Ø00
ZHA-125 SET	Ø25



Accessories for Profile and Compact Cylinder | ISO

page 142

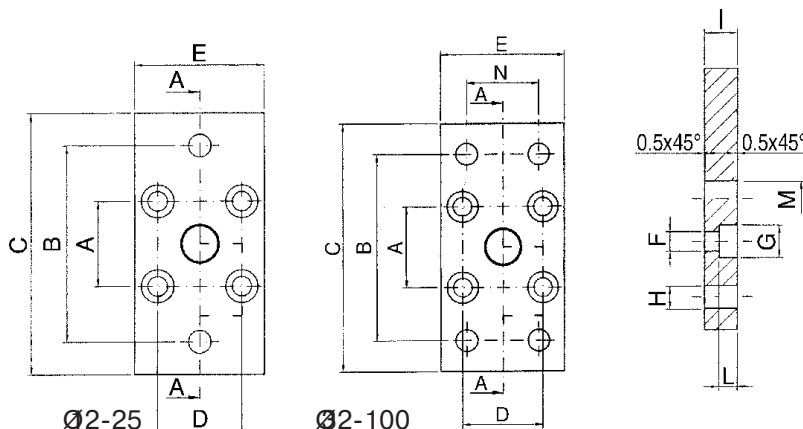
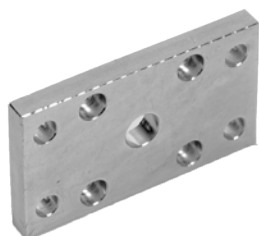


Rod lock
ISO 15552 cylinder

VRL

Type	Diameter	A	B	C	D	E	F	G	H	L	M	N	O	P	Q
VRL 32	Ø2	30	86	26	33,25	9	G1/8	M6	8	60	67,5	6	20	47	32,5
VRL 40	Ø0	34,5	100	30	42,5	9	G1/8	M6	8	70	80	6	20	54	38
VRL 50	Ø0	40	127	37	58	12,5	G1/8	M8	12	90	100	8	24	65	46,5
VRL 63	Ø3	45	127	37	59	17,5	G1/8	M8	12	90	100	8	24	75	56,5
VRL 80	Ø0	45	156	46	69	17,5	G1/4	M10	16	110	120	12	32	95	72
VRL 100	Ø00	55	161	51	69	20	G1/4	M10	16	110	120	12	32	114	89
VRL 125	Ø25	60	205	65	84,5	19	G1/4	M12	20	140	156	20	45	138	110

Accessories for Compact Cylinder | UNITOP



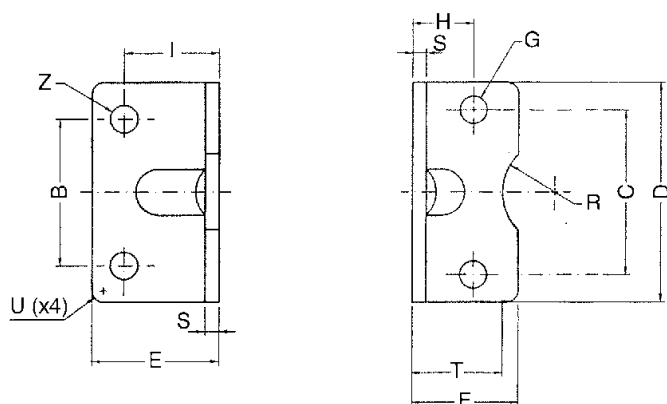
Flange

QFL

Type	Diameter	A	B	C	D	E	F	G	H	I	L	M	N
QFL 12-16	Ø2-16	18	43	55	18	29	4,5	9	5,5	10	5,4	10	-
QFL 20	Ø0	22	55	70	22	36	5,5	10	6,6	10	5,4	12	-
QFL 25	Ø5	26	60	76	26	40	5,5	10	6,6	10	5,4	12	-
QFL 32	Ø2	32	65	80	32	50	6,6	11	7	10	6,4	14	32
QFL 40	Ø0	42	82	102	42	60	6,6	11	9	10	6,4	14	36
QFL 50	Ø0	50	90	110	50	68	9	15	9	12	8,6	18	45
QFL 63	Ø3	62	110	130	62	87	11	15	9	15	10,6	18	50
QFL 80	Ø0	82	135	160	82	107	11	18	12	15	10,6	23	63
QFL 100	Ø00	103	163	190	103	128	11	18	14	15	10,6	28	75



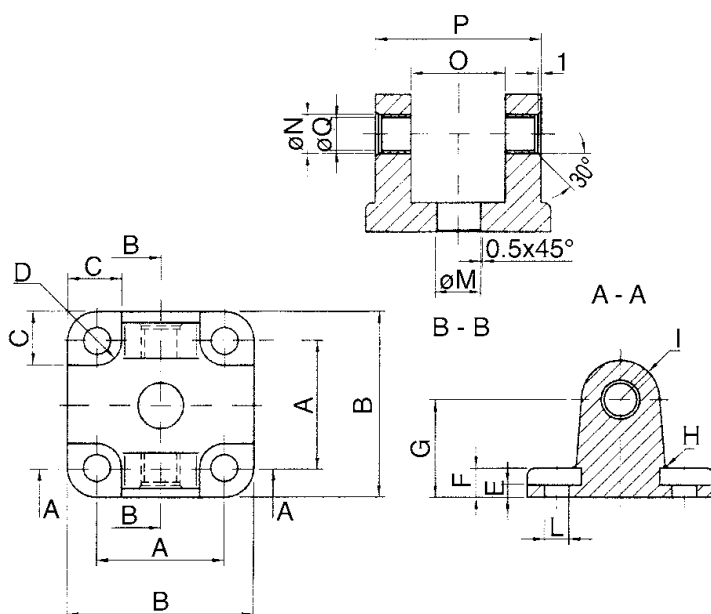
Accessories for Compact Cylinder | UNITOP



QCP

Foot mounting

Type	Diameter	C	B	D	E	F	G	H	I	S	T	R	U	Z
QCP 12-16	Ø2-16	18	18	30	17,5	17,5	4,4	13	13	3	15	9	2	5,5
QCP 20	Ø0	22	22	36	22	22	5,4	16	16	4	17	10	2	6,6
QCP 25	Ø5	26	26	40	22	23	5,4	17	16	4	19	11	2	6,6
QCP 32	Ø2	32	32	50	26	24	6,6	16	18	5	20	12	2	6,6
QCP 40	Ø0	42	42	60	28	29,5	6,6	21,5	20	5	-	-	5	9
QCP 50	Ø0	50	50	68	32	30	9	22	24	6	-	-	5	9
QCP 63	Ø3	62	62	84	39	39	9	28,5	27	6	-	-	5	11
QCP 80	Ø0	82	82	102	36,5	36,5	11	24,5	30	8	-	-	5	11
QCP 100	Ø00	103	103	123	38,5	38,5	11	26,5	33	8	-	-	5	13,5



QCF

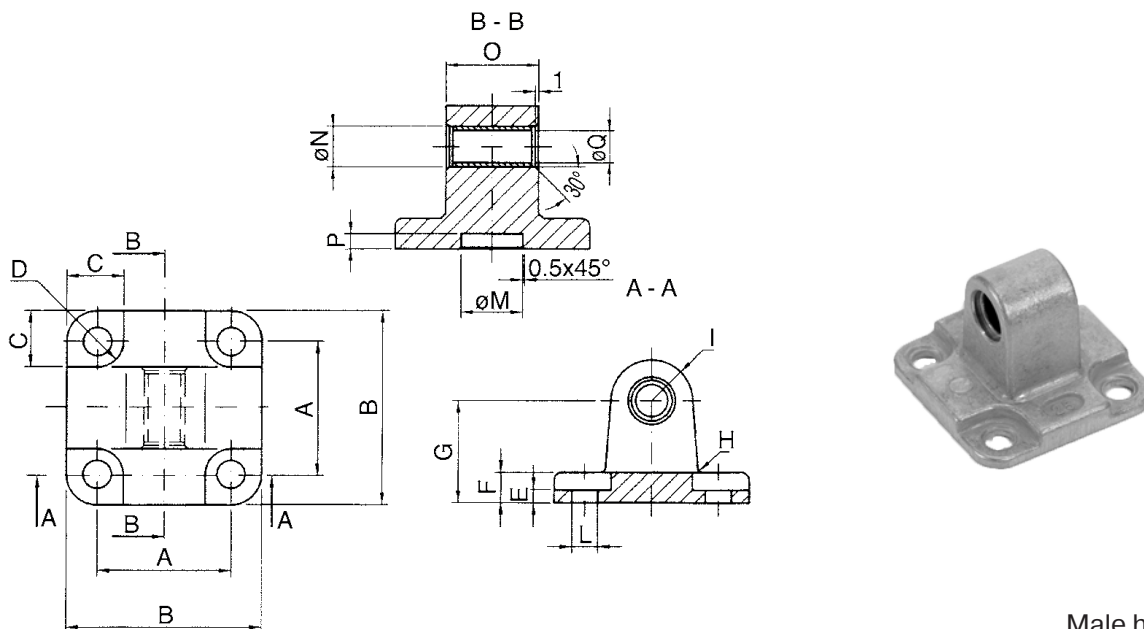
Female clevis bracket

Type	Diameter	A	B	C	D	E	F	G	H	I	L	M	N	O	P	Q
QCF 32	Ø2	32	48	13,5	5,5	5,5	9	22	2,5	10	6,6	14	12	26	45	10
QCF 40	Ø0	42	58	13,5	5,5	5,5	9	25	2,5	12,5	6,6	14	14	28	52	12
QCF 50	Ø0	50	66	15,5	6,5	6,5	11	27	2,5	12,5	9	18	14	32	60	12
QCF 63	Ø3	62	83	18	6,5	6,5	11	32	4	15	11	18	18	40	70	16
QCF 80	Ø0	82	102	19	10	10	13	36	4	15	11	23	18	50	90	16
QCF 100	Ø00	103	123	19	10	10	15	41	4	20	11	28	23	60	110	20



Accessories for Compact Cylinder | UNITOP

page 144

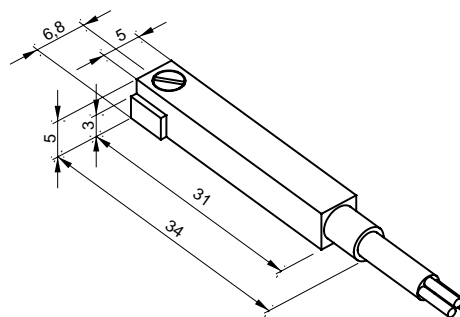


QCM

Male hinge self lubricating

Type	Diameter	A	B	C	D	E	F	G	H	I	L	M	N	O	P	Q
QCM 12-16	Ø2-16	18	27	10	4,5	2,6	6	16	2	6	4,5	10	8	12	3	6
QCM 20	Ø0	22	34	11	5	2,6	6	20	2	8	5,5	12	10	16	3	8
QCM 25	Ø5	26	38	11	5	2,6	6	20	2	8	5,5	12	10	16	3	8

Proximity Switches and Fasteners



SKR

REED switch

Type	Voltage	Max. current	Cable length	Temperature range
SKR-130	5...130 V AC/DC	200 mA	2 m	-5°C...+70°C
SKR-230	5...230 V AC	200 mA	2 m	-5°C...+70°C

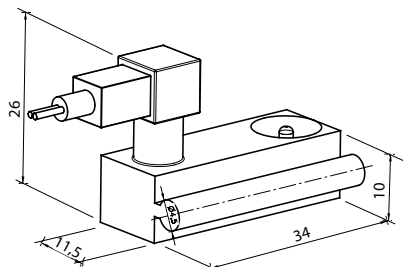
SKH

PNP switch

Type	Voltage	Max. current	Cable length	Temperature range
SKH-30	10...30 V DC	200 mA	2 m	-5°C...+70°C
SKH-30-M8	10...30 V DC	200 mA	0,3 m (M8x1)	-5°C...+70°C



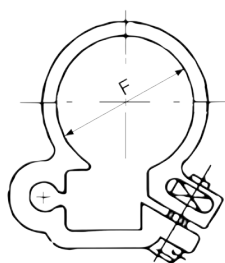
Proximity Switches and Fasteners



SM

REED switch

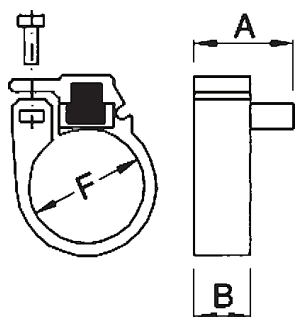
Type	Voltage	Max. current	Cable length	Temperature range
SM	3...230 V AC/DC	500 mA	2,5 m	-20°C...+85°C



RX

Fastener to mount the SM-switch to round cylinders of the R-series

Type	Diameter	F
RX 8	Ø	9,3
RX 10	Ø0	11,3
RX 12	Ø2	13,3
RX 16	Ø6	17,3
RX 20	Ø0	21,3
RX 25	Ø5	26,3



RXP

Fastener to mount the SKR or SKH switch to round cylinders of the R-series or A-series

Type	Diameter	F	A	B
RXP 8	Ø	9,4	14	8
RXP 10	Ø0	11,3	14	8
RXP 12	Ø2	13,3	14	8
RXP 16	Ø6	17,3	14	8
RXP 20	Ø0	21,3	14	8
RXP 25	Ø5	26,3	14	8



Proximity Switches and Fasteners

page 146



Fastener to mount the SM switch to ISO 15552 profile cylinders of the D-series

DX

Type	Diameter
DX 32-40	Ø2-40
DX 50-63	Ø0-63
DX 80	Ø0
DX 100-125	Ø00-125



Fastener to mount the SKR or SKH switch to ISO 15552 profile cylinders of the D-series

DXS

Type	Diameter
DXS 32-40	Ø2-40
DXS 50-63	Ø0-63
DXS 80	Ø0
DXS 100-125	Ø00-125

Cylinder Repair Kits



QIR

Repair kit
Q-Series
UNITOP

Type	Diameter
QIR-12	Ø2
QIR-16	Ø6
QIR-20	Ø0
QIR-25	Ø5
QIR-32	Ø2
QIR-40	Ø0
QIR-50	Ø0
QIR-63	Ø3
QIR-80	Ø0
QIR-100	Ø00

HIR

Repair kit
H-series
DIR ISO 15552

Type	Diameter
HIR-32	Ø2
HIR-40	Ø0
HIR-50	Ø0
HIR-63	Ø3
HIR-80	Ø0
HIR-100	Ø00
HIR-125	Ø25

DIR

Repair kit
D-series
ISO 15552

Type	Diameter
DIR-32	Ø2
DIR-40	Ø0
DIR-50	Ø0
DIR-63	Ø3
DIR-80	Ø0
DIR-100	Ø00
DIR-125	Ø25

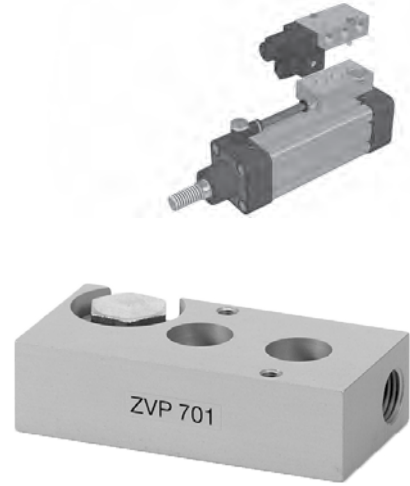
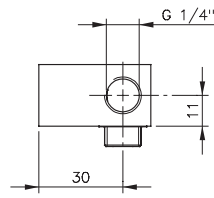
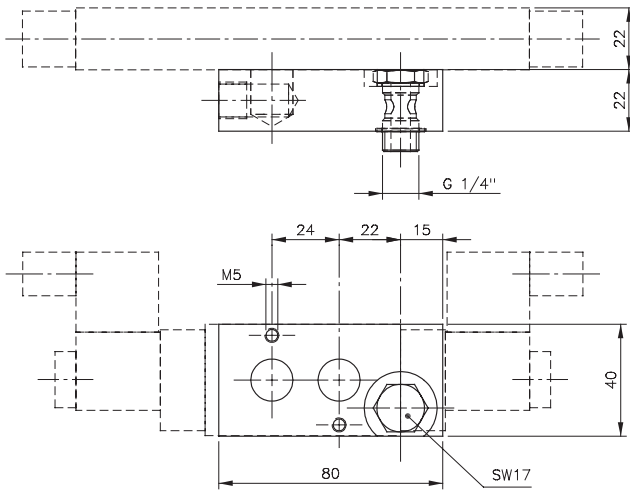
VIR

Repair kit
V-series
ISO 21287

Type	Diameter
VIR-32	Ø2
VIR-40	Ø0
VIR-50	Ø0
VIR-63	Ø3
VIR-80	Ø0
VIR-100	Ø00



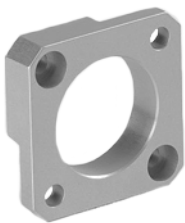
Other Accessories



ZVP

Cylinder-Valve-Combination Plate

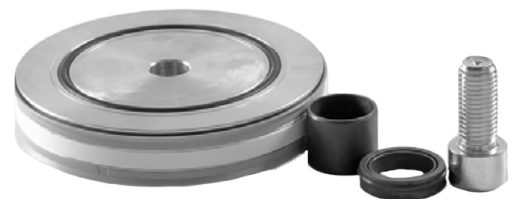
Type	Thread A	Thread B	Orifice size	Interface
ZVP 701	G1/4" banjo-screw	G1/4"	DN 7	NAMUR [G1/4"]
ZVP 101	G3/8" banjo-screw	G3/8"	DN 10	NAMUR [G1/4"]
ZVP 121	G1/2" banjo-screw	G1/2"	DN 12	NAMUR [G1/2"]
ZVP 121-701	G1/2" banjo-screw	G1/4"	DN 7	NAMUR [G1/4"]



Adapter plates to assemble cylinders "back-to-back"

TZA

Type
TZA-032 SET
TZA-040 SET
TZA-050 SET
TZA-063 SET
TZA-080 SET
TZA-100 SET



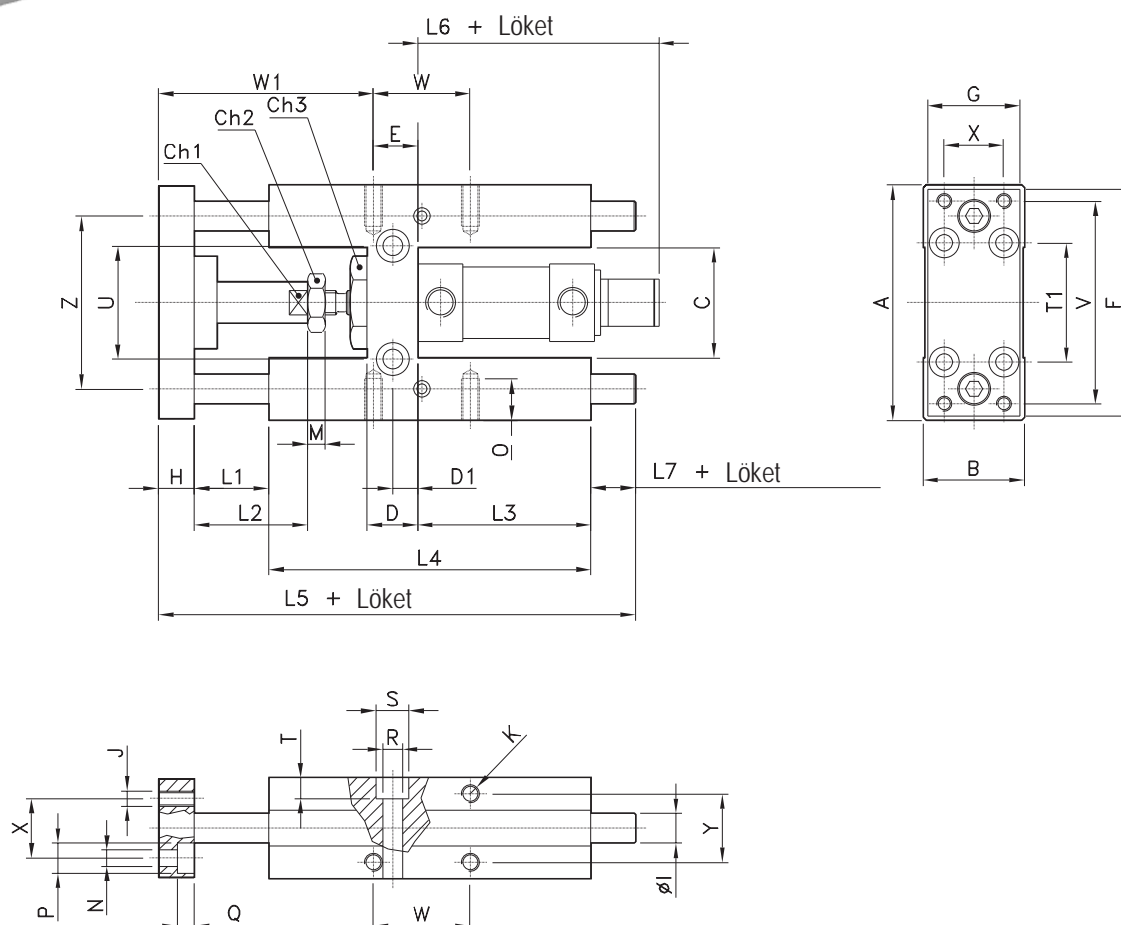
VTS LAZ

Repair kit LAZ-series

Type
VTS LAZ 80
VTS LAZ 100
VTS LAZ 125
VTS LAZ 160
VTS LAZ 200
VTS LAZ 250
VTS LAZ 320



Guide Units for Round Cylinder | ISO 6432



RHS

H-shaped guide unit with plain bearing

Type	Stroke	Diameter	A	B	C	Ch1	Ch2	Ch3	D	D1	E
RHS 12-16/...	50-500	Ø2-16	69	30	30	8	10	24	12	6	8
RHS 20/...	50-500	Ø0	79	34	37	12	13	27	17	8,5	15
RHS 25/...	50-500	Ø5	79	34	37	12	17	27	17	8,5	15

Type	F	G	H	Ø	J	K	L1	L2	L3	L4	L5	L6	L7	M
RHS 12-16/...	66	29	10	10	M4	M4	-	18	46	68	124	-	20,5	4
RHS 20/...	78	32	12	12	M5	M6	3	18	58	108	166	43	21	5
RHS 25/...	78	32	12	12	M5	M6	3	18	58	108	166	43	21	6

Type	N	O	P	Q	R	S	T	T1	U	V	W	W1	X	Y	Z
RHS 12-16/...	4,5	6	8	4,5	5,5	9	5,5	32	24	58	18	-	18	22	49,5
RHS 20/...	5,5	9	10	7,5	6,5	11	6,5	38	38	68	32,5	50	20	23	58
RHS 25/...	5,5	9	10	7,5	6,5	11	6,5	38	38	68	32,5	50	20	23	58



Guide Units for Round Cylinder | ISO 6432

page 149

RHSL

H-shaped guide unit with plain bearing and longer coupling

Type	Stroke	Diameter		A	B	C	Ch1	Ch2	Ch3	D	D1	E
RHSL 12-16/...	50-500	Ø2-16		69	30	30	8	10	24	12	6	8
RHSL 20/...	50-500	Ø0		79	34	37	12	13	27	17	8,5	15
RHSL 25/...	50-500	Ø5		79	34	37	12	17	27	17	8,5	15

Type	F	G	H	Ø	J	K	L1	L2	L3	L4	L5	L6	L7	M
RHSL 12-16/...	66	29	10	10	M 4	M 4	25	18	46	68	123,5	73	20,5	4
RHSL 20/...	78	32	12	12	M 5	M 6	25	40	58	108	166	87	21	5
RHSL 25/...	78	32	12	12	M 5	M 6	25	40	58	108	166	87	21	6

Type	N	O	P	Q	R	S	T	T1	U	V	W	W1	X	Y	Z
RHSL 12-16/...	4,5	6	8	4,5	5,5	9	5,5	32	24	58	18	-	18	22	49,5
RHSL 20/...	5,5	9	10	7,5	6,5	11	6,5	38	38	68	32,5	50	20	23	58
RHSL 25/...	5,5	9	10	7,5	6,5	11	6,5	38	38	68	32,5	50	20	23	58

RHG

H-shaped guide unit with ball bearings

Type	Stroke	Diameter		A	B	C	Ch1	Ch2	Ch3	D	D1	E
RHG 12-16/...	50-500	Ø2-16		69	30	30	8	10	24	12	6	8
RHG 20/...	50-500	Ø0		79	34	37	12	13	27	17	8,5	15
RHG 25/...	50-500	Ø5		79	34	37	12	17	27	17	8,5	15

Type	F	G	H	Ø	J	K	L1	L2	L3	L4	L5	L6	L7	M
RHG 12-16/...	66	29	10	8	M 4	M 4	-	18	46	68	123,5	-	20,5	4
RHG 20/...	78	32	12	10	M 5	M 6	3	18	58	108	166	43	21	5
RHG 25/...	78	32	12	10	M 5	M 6	3	18	58	108	166	43	21	6

Type	N	O	P	Q	R	S	T	T1	U	V	W	W1	X	Y	Z
RHG 12-16/...	4,5	6	8	4,5	5,5	9	5,5	32	24	58	18	-	18	22	49,5
RHG 20/...	5,5	9	10	7,5	6,5	11	6,5	38	38	68	32,5	50	20	23	58
RHG 25/...	5,5	9	10	7,5	6,5	11	6,5	38	38	68	32,5	50	20	23	58

RHGL

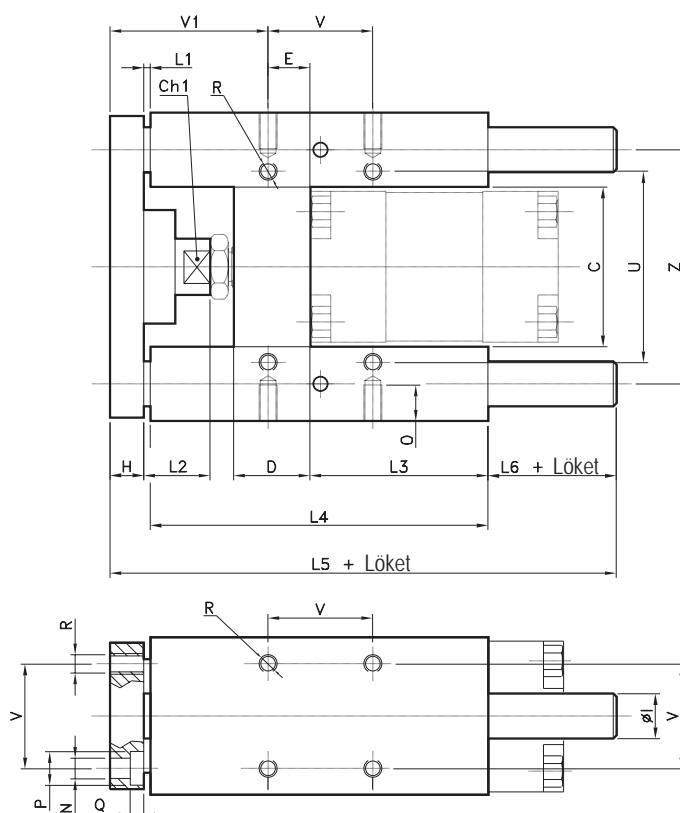
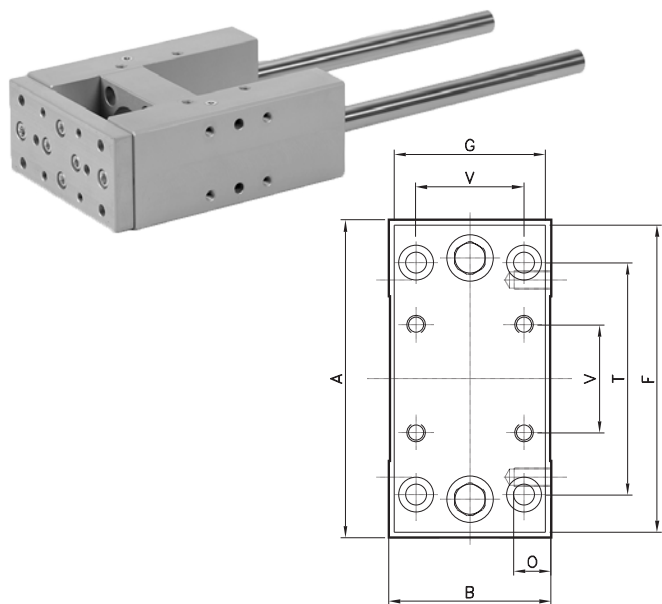
H-shaped guide unit with ball bearings and longer coupling

Type	Stroke	Diameter		A	B	C	Ch1	Ch2	Ch3	D	D1	E
RHGL 12-16/...	50-500	Ø2-16		69	30	30	8	10	24	12	6	8
RHGL 20/...	50-500	Ø0		79	34	37	12	13	27	17	8,5	15
RHGL 25/...	50-500	Ø5		79	34	37	12	17	27	17	8,5	15

Type	F	G	H	Ø	J	K	L1	L2	L3	L4	L5	L6	L7	M
RHGL 12-16/...	66	29	10	8	M 4	M 4	25	18	46	68	123,5	73	20,5	4
RHGL 20/...	78	32	12	10	M 5	M 6	25	40	58	108	166	87	21	5
RHGL 25/...	78	32	12	10	M 5	M 6	25	40	58	108	166	87	21	6

Type	N	O	P	Q	R	S	T	T1	U	V	W	W1	X	Y	Z
RHGL 12-16/...	4,5	6	8	4,5	5,5	9	5,5	32	24	58	18	-	18	22	49,5
RHGL 20/...	5,5	9	10	7,5	6,5	11	6,5	38	38	68	32,5	50	20	23	58
RHGL 25/...	5,5	9	10	7,5	6,5	11	6,5	38	38	68	32,5	50	20	23	58

Guide Units for Profile Cylinder | ISO 15552



DHS

H-shaped guide unit with plain bearing

Type	Stroke	Diameter	A	B	C	Ch1	D	E	F	G	H	Ø
DHS 32/...	50-500	Ø2	97	49	51	15	24	4,3	93	45	12	12
DHS 40/...	50-500	Ø0	115	58	58,2	15	28	11	112	55	12	16
DHS 50/...	50-500	Ø0	137	70	70,2	20	34	18,8	134	65	15	20
DHS 63/...	50-500	Ø3	152	85	85,2	20	34	15,3	147	80	15	20
DHS 80/...	50-500	Ø0	189	105	105,5	26	50	25	180	100	20	25
DHS 100/...	50-500	Ø00	213	130	130,5	26	55	30	206	120	20	25

Type	L1	L2	L3	L4	L5	L6	N	O	P	Q	R	T	U	V	V1	Z
DHS 32/...	3	19	75	125	187	47	6,6	12	11	6,5	M 6	78	61	32,5	60,7	74
DHS 40/...	3	24	80	140	207	52	6,6	12	11	6,5	M 6	84	69	38	64	87
DHS 50/...	3	27	78	148	223	57	9	16	15	8,5	M 8	100	85	46,5	69,2	104
DHS 63/...	3	27	106	178	243	47	9	16	15	9	M 8	105	100	56,5	74,7	119
DHS 80/...	3	27	111	195	267	49	11	20	18	11	M 10	130	130	72	82	148
DHS 100/...	3	27	128	218	290	49	11	20	18	11	M 10	150	150	89	83	173

DHSL

H-shaped guide unit with plain bearing and longer coupling

Type	Stroke	Diameter	A	B	C	Ch1	D	E	F	G	H	Ø
DHSL 32/...	50-500	Ø2	97	49	51	15	24	4,3	93	45	12	12
DHSL 40/...	50-500	Ø0	115	58	58,2	15	28	11	112	55	12	16
DHSL 50/...	50-500	Ø0	137	70	70,2	20	34	18,8	134	65	15	20
DHSL 63/...	50-500	Ø3	152	85	85,2	20	34	15,3	147	80	15	20
DHSL 80/...	50-500	Ø0	189	105	105,5	26	50	25	180	100	20	25
DHSL 100/...	50-500	Ø00	213	130	130,5	26	55	30	206	120	20	25



Guide Units for Profile Cylinder | ISO 15552

page 151

Type	L1	L2	L3	L4	L5	L6	N	O	P	Q	R	T	U	V	V1	Z
DHSL 32/...	25	42	75	125	187	25	6,6	12	11	6,5	M 6	78	61	32,5	82,7	74
DHSL 40/...	25	42	80	140	207	30	6,6	12	11	6,5	M 6	84	69	38	86	87
DHSL 50/...	25	50	78	148	223	35	9	16	15	8,5	M 8	100	85	46,5	91,2	104
DHSL 63/...	25	50	106	178	243	25	9	16	15	9	M 8	105	100	56,5	96,7	119
DHSL 80/...	25	50	111	195	267	27	11	20	18	11	M 10	130	130	72	104	148
DHSL 100/...	25	50	128	218	290	27	11	20	18	11	M 10	150	150	89	105	173

DHG

H-shaped guide unit
with ball bearings

Type	Stroke	Diameter	A	B	C	Ch1	D	E	F	G	H	Ø
DHG 32/...	50-500	Ø2	97	49	51	15	24	4,3	93	45	12	12
DHG 40/...	50-500	Ø0	115	58	58,2	15	28	11	112	55	12	16
DHG 50/...	50-500	Ø0	137	70	70,2	20	34	18,8	134	65	15	20
DHG 63/...	50-500	Ø3	152	85	85,2	20	34	15,3	147	80	15	20
DHG 80/...	50-500	Ø0	189	105	105,5	26	50	25	180	100	20	25
DHG 100/...	50-500	Ø00	213	130	130,5	26	55	30	206	120	20	25

Type	L1	L2	L3	L4	L5	L6	N	O	P	Q	R	T	U	V	V1	Z
DHG 32/...	3	19	75	125	187	47	6,6	12	11	6,5	M 6	78	61	32,5	60,7	74
DHG 40/...	3	24	80	140	207	52	6,6	12	11	6,5	M 6	84	69	38	64	87
DHG 50/...	3	27	78	148	223	57	9	16	15	8,5	M 8	100	85	46,5	69,2	104
DHG 63/...	3	27	106	178	243	47	9	16	15	9	M 8	105	100	56,5	74,7	119
DHG 80/...	3	27	111	195	267	49	11	20	18	11	M 10	130	130	72	82	148
DHG 100/...	3	27	128	218	290	49	11	20	18	11	M 10	150	150	89	83	173

DHGL

H-shaped guide unit with ball
bearings and longer coupling

Type	Stroke	Diameter	A	B	C	Ch1	D	E	F	G	H	Ø
DHGL 32/...	50-500	Ø2	97	49	51	15	24	4,3	93	45	12	12
DHGL 40/...	50-500	Ø0	115	58	58,2	15	28	11	112	55	12	16
DHGL 50/...	50-500	Ø0	137	70	70,2	20	34	18,8	134	65	15	20
DHGL 63/...	50-500	Ø3	152	85	85,2	20	34	15,3	147	80	15	20
DHGL 80/...	50-500	Ø0	189	105	105,5	26	50	25	180	100	20	25
DHGL 100/...	50-500	Ø00	213	130	130,5	26	55	30	206	120	20	25

Type	L1	L2	L3	L4	L5	L6	N	O	P	Q	R	T	U	V	V1	Z
DHGL 32/...	25	42	75	125	187	25	6,6	12	11	6,5	M 6	78	61	32,5	82,7	74
DHGL 40/...	25	42	80	140	207	30	6,6	12	11	6,5	M 6	84	69	38	86	87
DHGL 50/...	25	50	78	148	223	35	9	16	15	8,5	M 8	100	85	46,5	91,2	104
DHGL 63/...	25	50	106	178	243	25	9	16	15	9	M 8	105	100	56,5	96,7	119
DHGL 80/...	25	50	111	195	267	27	11	20	18	11	M 10	130	130	72	104	148
DHGL 100/...	25	50	128	218	290	27	11	20	18	11	M 10	150	150	89	105	173





Hafner-Pneumatik Krämer KG
Stammheimer Straße 10

D-70806 Kornwestheim

Phone+49 - 71 54 - 17 85 890
Fax +49 -71 54 - 17 85 89 28

info@hafner-pneumatik.de
www.hafner-pneumatik.com

Hafner-Pneumatika Kft.
Püski út 3

9228 Halászi - Hungary

Phone+36 - 96 - 57 30 12
Fax +36 -96 - 21 06 15

ertesites@hafner-pneumatika.de
www.hafner-pneumatika.com